

# Rough Sleeping Snapshot Estimates

## Independent Partners

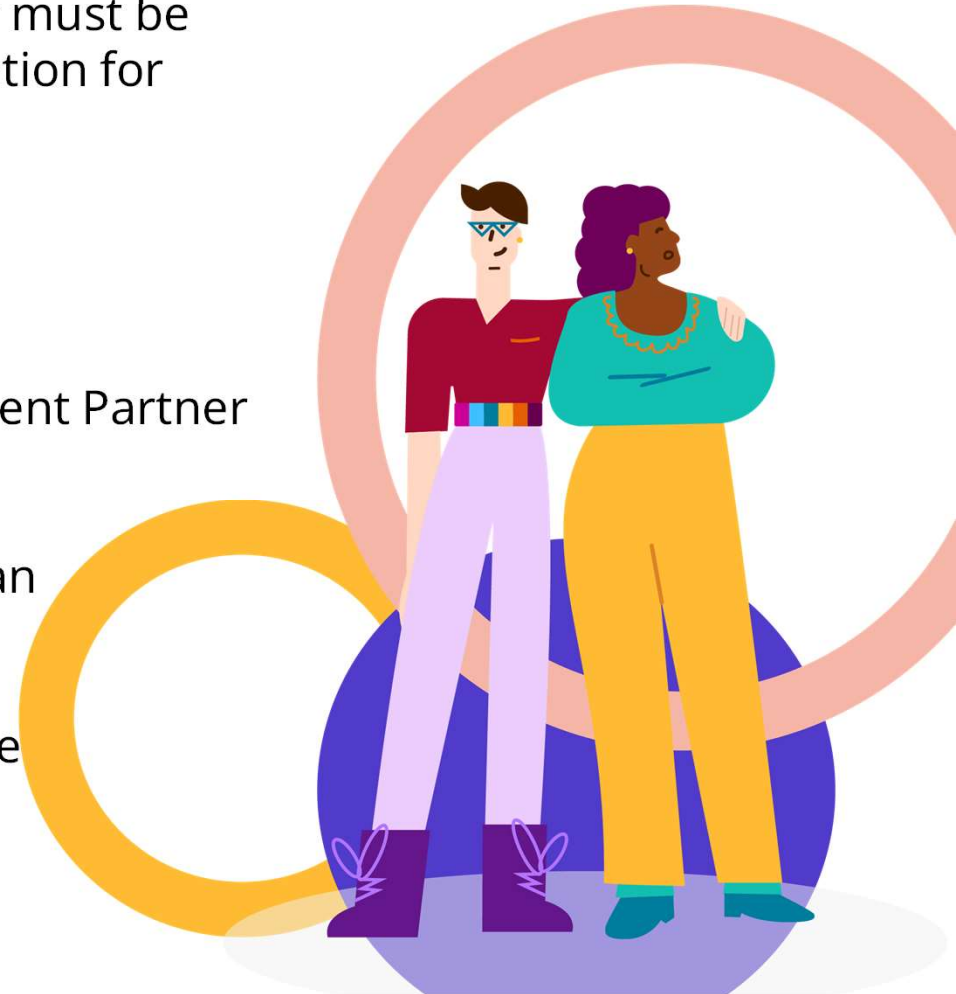
For your Rough Sleeping Snapshot Estimate to be verified by Homeless Link, at least one Independent Partner must be involved in collecting the rough sleeping information for your area

An Independent Partner is someone who is not commissioned or funded by the Local Authority

Identifying and contacting at least one Independent Partner should be part of your planning process

If possible, we strongly advise involving more than one Independent Partner

Don't hesitate to ask for support to find a suitable Independent Partner



# Rough Sleeping Snapshot Estimates

## Independent Partners



The role of the Independent Partner is to attend the count-based estimate, or estimate meeting (depending on your choice of approach).

An Independent Partner might also be involved in providing intelligence on the individuals rough sleeping.

**What are some examples of Independent Partners?**

- ✓ Community groups
- ✓ Faith groups
- ✓ Soup kitchens
- ✓ Trusted volunteers from the public
- ✓ People with lived experience of homelessness
- ✓ A local football foundation

**Who would NOT class as an Independent Partner?**

- ✗ The Homeless Link Verifier
- ✗ Outreach workers
- ✗ Police
- ✗ Statutory Organisations
- ✗ DLUHC staff
- ✗ County Council employees
- ✗ Employees from neighbouring LAs

# Homeless Link

## **What we do**

Homeless Link is the national membership charity for frontline homelessness services. We work to improve services through research, guidance and learning, and campaign for policy change that will ensure everyone has a place to call home and the support they need to keep it.

**[homeless.org.uk](https://homeless.org.uk)**

**[@HomelessLink](https://twitter.com/HomelessLink)**